



Worldsoft es. Company description

September 28, 2018

Message from the President

❖ From software development company to IT company

Worldsoft-es utilize organizational capabilities, communication, management system, teamwork, We will strive to train engineers who are well-balanced and well-balanced and to improve their skills.

From the beginning of the establishment, the technology of software development is a tool, and we will continue our business activities while conscious of using it.

A software development company can not maintain it in future only by simply designing and creating a program.

It is a software development company aiming at contributing to society by combining software development technology and experience of engineers up to now, challenging new projects and new business development, and providing the solution service that customers desire.

And to the IT company

President's profile

- **Born in Sasebo City, Nagasaki Prefecture. Currently living in Kanagawa-ku, Yokohama-shi, Kanagawa prefecture.**
- **During elementary school I played a major role in the softball team in the town.**
- **While living in Yokosuka-shi, Kanagawa Prefecture, he enrolled in the baseball club at junior high and high school.**
It is my best memories that still I can not forget that I won the high school Yokohama High School by releasing home runs at the spring competition of high school 3rd year.
- **In 1978, I entered the Faculty of Economics, Okura University.**
As a manager of the Athletic Federation American Football Club, I experienced team-wide management such as analysis of competing teams, creation of training menus, players' health care and so on.
- **In 1983, I got a job at a software development company in Shibuya-ku, Tokyo.**
I am assigned to the sales department and are responsible for sales of school administrative systems and sales of personal computers and facsimiles. I worked there for 15 years as a sales manager of system engineering service and sales of school administration system.
- **In 1997, I established "Worldsoft" with my colleague volunteer engineers.**



Representative Director

Hironori Inoue

Company information

Management philosophy

We aim to become a group of engineers who can propose and build systems that customers are seeking.

Business objectives

1. Foster engineers who are liked by customers.
2. We will support employees' self-goal achievement.
3. Foster an engineer with a broad perspective.
4. Social contribution by building a system.

Business contents

We mainly work on development using smartphone application development · tools, EC site construction operation, infrastructure construction support, GSuite introduction support and system engineering service. Hokkaido Tokachi Sales Office has been developing business from the end of 2009 in business centering on software development and infrastructure construction.

We officially register the branch office in July 2011 and we are putting more emphasis on approaches to local governments and regional companies.

Company Features

Since software development requires each business engineer management skill of each person, studying hospitality several years ago, now focusing on OFFJT education aiming for skill up gradually in anticipation of three years ahead We will. In addition, emphasis is placed on in-house communication, and regular meetings are held once a month to promote interaction among employees.

Company Profile 1

es of Worldsoft es. is.....
e:engineer s:sales

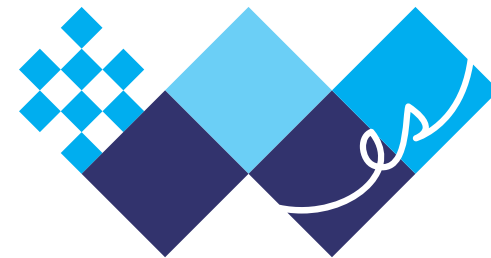
It means that the sales management section supports it so that the engineers can do their best.

❖ Corporate history

July 28, 1997	Established in Hitaruzaru Ota-ku
February 1999	Relocate head office (Meguro-ku Jiyugaoka) Changed the company name to Worldsoft es.
September 2000	Capital increased to 16 million yen
June 1, 2007	Started general worker dispatching business
June 11, 2007	Acquisition of privacy mark
July 2011	Started GoogleApps reseller
July 1, 2011	The Tokachi branch office opened
July 28, 2012	Company logo change
August 2014	Good job presentation fair exhibition
March, 2015	Retail Tech Japan exhibition
February, 2016	Exhibited at Tokachi's corporate strength 2016
July, 2016	Office renovation open

Feelings included in the logo

Checkered flag ocean and earth blue sky



- Highly satisfied customer satisfaction that always finishes at the top
- Fields where employees are active
- Hospitality to touch with customers with a refreshing feeling

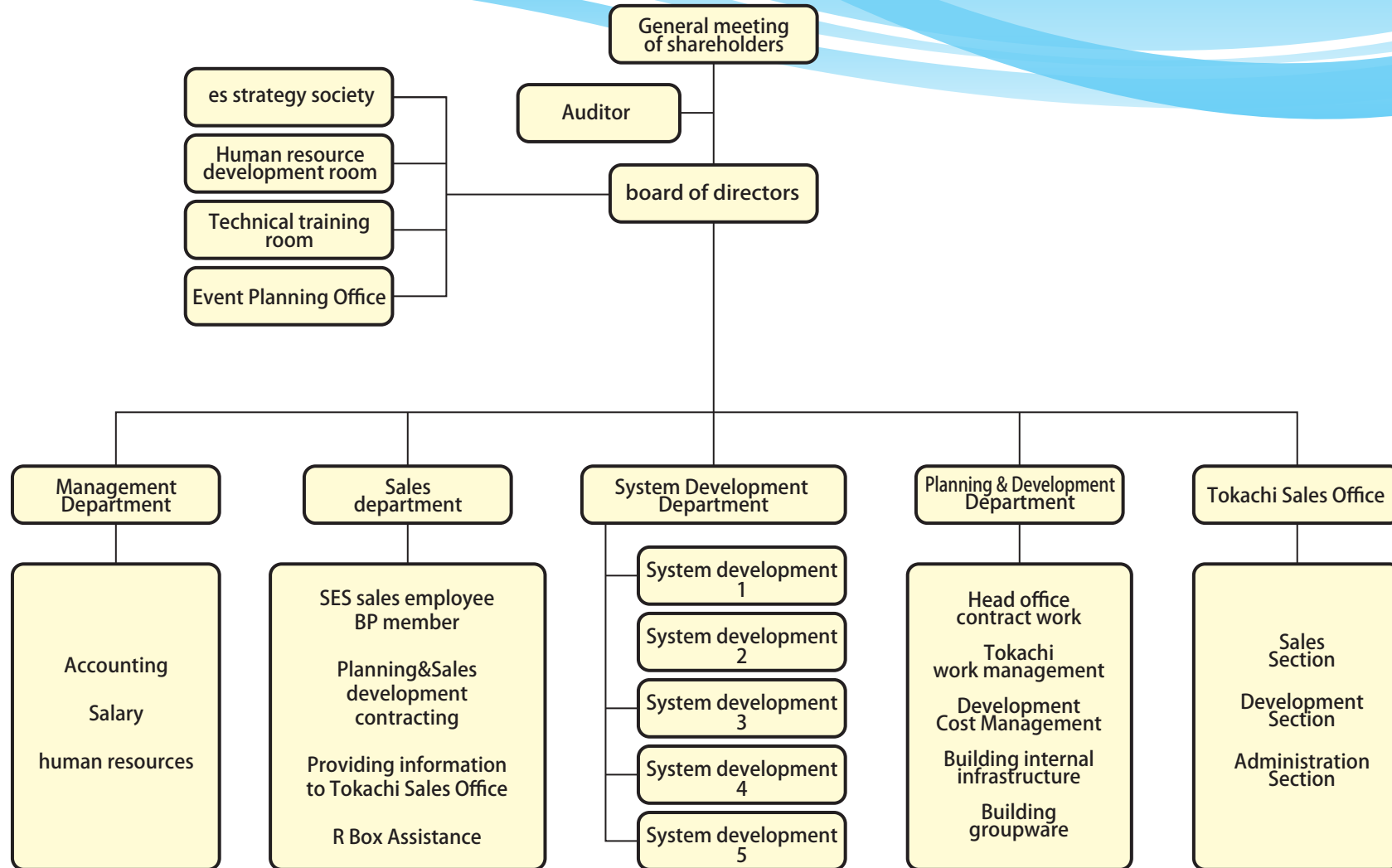
Company profile 2

Company name	Worldsoft es. Inc.
Company location	<p>★ Headquarters: Jiyugaoka 1 - chome 3 22, Meguro - ku, Tokyo Jiyugaoka NEXT · ONE Building 2F Phone: 03-5731-8071 FAX: 03-5731-8072 https://www.worldsoft.co.jp/</p> <p>: Search by "Worldsoft es. Inc."</p> <p>★ Tokachi Sales Office: 4-4 South2 West6 Obihiro-City,Hokkaido Consec Bld. 1F Telephone / FAX: 0155-67-1023</p> <p>: https://www.facebook.com/wstokachi/</p>
Establishment	July 28, 1997
Capital	16 million yen
Settlement period	March 31
amount of sales	500 million yen (FY2009 results)

employee	52 people (including 6 women) 2018 April
related company	R Box Co., Ltd.
Main bank	Sumitomo Mitsui Banking Co. Jiyugaoka branch Mizuho Bank Jiyugaoka Branch
Representative	Representative Director Hironori Inoue Director Ryoichi Karasawa Director Masato Takahashi Director Norimasa Otsuki
Welfare	Social insurance (health insurance, welfare pension, employment insurance, workers compensation insurance) Related IT Software Health Insurance Union (ITS) Qualification acquisition scholarship system Company trip Various training Club activities (Marathon Department, Golf Department)

Company profile 3

~Organization chart~



Main business contents · Development results

System development

■ RPA

Tools: UiPath, BizRobo
Quotation for manufacturing industry · Order etc.
Email automatic transmission robot
Data capture / aggregation / creation of excel
form Transmitting robot

■ Open system

Communication company backbone system,
user management system,
Travel comparison website construction

■ General purpose system

Life insurance and maintenance system,
securities agency system

■ Infrastructure Network

Design, build, maintain

■ Maintenance / operation system

Web server construction, Web site maintenance,
Service operation / One shot business

■ Other

Life insurance & PMO operations

Major trading partners

- Ai net Inc.
- NTT DoCoMo, Inc.
- JFE Systems Co., Ltd.
- JFE Com Service Co., Ltd.
- SPEC Corporation
- DoCoMo Systems Inc.
- other

Main business contents · Development achievement 2

Smartphone application development

- AR application
- Communication application
- Public Interest Competition Guide
- Tweet Search App
- QR code stamp rally application
- Point system application
- Mobile order application
- Pre-order application for restaurants
- Free Paper App

Web site creation

- Web Promotion
- Design
- SEO measures
- Update, Maintenance and Management

Surveillance camera system

- Security of stores, for appeal
- For crime prevention and monitoring of condominiums
- Monitor kindergartens and deter illegal invasion
- Monitoring warehouses and factories
- Remote monitoring with a smart tablet
- Automatic Face Recognition System for Employees

Major trading partners

Head office customer

- Mikimoto Co., Ltd.
- Open Door Co., Ltd.
- Katsumidori Co., Ltd.
- Koushin Art Co., Ltd. MMAP
- Nonpi Co., Ltd.
- Heart core Co., Ltd.
- Medical corporation corporation Seijikai

Tokachi Sales Office Customer

- Hokkaido Tokachi General Promotion Bureau
- Sogo Printing Co., Ltd.
- TY NET Co., Ltd.
- Soga Co., Ltd.
- Otofuke Environmental Management Center Co., Ltd.
- Bannei racing horse owner association general corporation